



# MATRIX<sup>PT</sup> & MATRIX<sup>ONE</sup>

**Ionization Chamber detector arrays for efficient and precise Patient QA**

**PROTON THERAPY QA**

PROTECT +  
ENHANCE +  
SAVE LIVES

# MatriXX<sup>PT</sup>

# MatriXX<sup>ONE</sup>



## Fastest

- Seamless and intuitive from set-up, to measurements and analysis
- Optimized workflow with myQA<sup>®</sup> for plan verification

## Most Accurate

- Shortest 20 ms sampling time: real-time measurements for rapidly changing fields and doses
- Proven Technology for Proton Therapy Beams also for Synchro-Cyclotron systems

## Most Reliable

- Ion chambers offer a long term stability and measurement without blind spots
- Your data is safely stored in one central database within myQA
- Data integrity with an advanced user management system

MatriXX-PT\_Rev1\_0319\_E | © IBA 2019 | All rights reserved | Manufacturer: IBA Dosimetry GmbH.  
Technical specifications and product features are subject to change without prior notice.

The product may not be available in your area.  
For availability, please contact to your local IBA Dosimetry Sales organization.

## Technical Information

### MatriXX<sup>PT</sup> and MatriXX<sup>ONE</sup>

- 1020 air-vented ionization chambers
- Automated k(t, p) correction of the chamber signal
- Lightweight 10 kg
- 20 ms read-out time without dead time
- Active area of 24.4 × 24.4 cm<sup>2</sup>
- Pixel spacing 7.6 mm

### MatriXX<sup>PT</sup>

- Ideal for Cyclotron PBS beams
- Chamber volume: 32 mm<sup>3</sup>
- Electrode gap: 2 mm

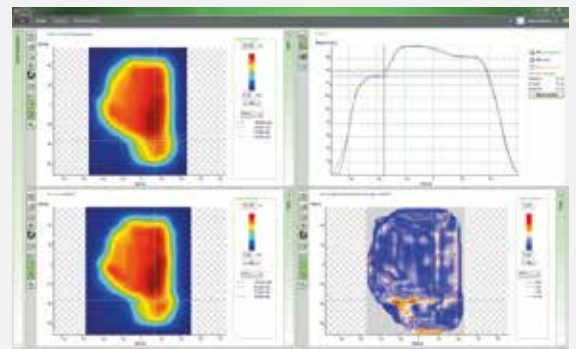
### MatriXX<sup>ONE</sup>

- Ideal for high intensity Synchro-Cyclotron systems
- Chamber volume: 16 mm<sup>3</sup>
- Electrode gap: 1 mm



### myQA Patients

Integrated Quality Assurance



Intuitive and efficient four-step Patient QA workflow

### IBA Dosimetry

Integrated Quality Assurance

Europe, Middle East, Africa | +49-9128-6070

North America and Latin America | +1-901-386-2242

Asia Pacific | +86-10-8080-9288

dosimetry-info@iba-group.com | iba-dosimetry.com

# DOSIMETRY

