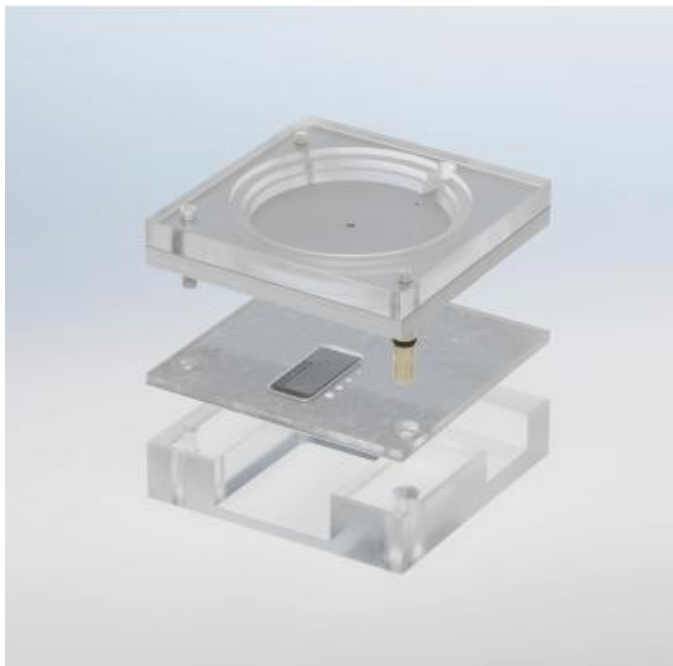


TEST DEVICE DigiDent

For acceptance- and constancy tests in accordance with German standard DIN 6868, part 51 and part 5 at **dental radiography equipment** with digital imaging systems.



Consisting of the following modules:

- Centring aid and 6 mm Al-attenuator
- Elements for determination of the image quality (resolution test and contrast holes)
- Base part with recess for image- and dose detector

This test device includes elements for determination of the image quality at CR and DR systems:

- A linepair test (either 2.0 – 6.3 lp/mm at type U or 2,5 and 5 lp/mm at type G) for determination of the resolution capability.
- Drilled holes of 1, 1,5, 2 and 2,5 mm diameter in a 0,5 mm thick aluminium shift for determination of the contrast.

The test device also includes a 6 mm thick Al-attenuator so that the image detector dose can be determined.

Status: Jul2008