

Technical Note 997-060_TN002_090130

OmniPro-Accept version 6.x

Module: RTPS Oncentra

Oncentra Electrons Air Measurements

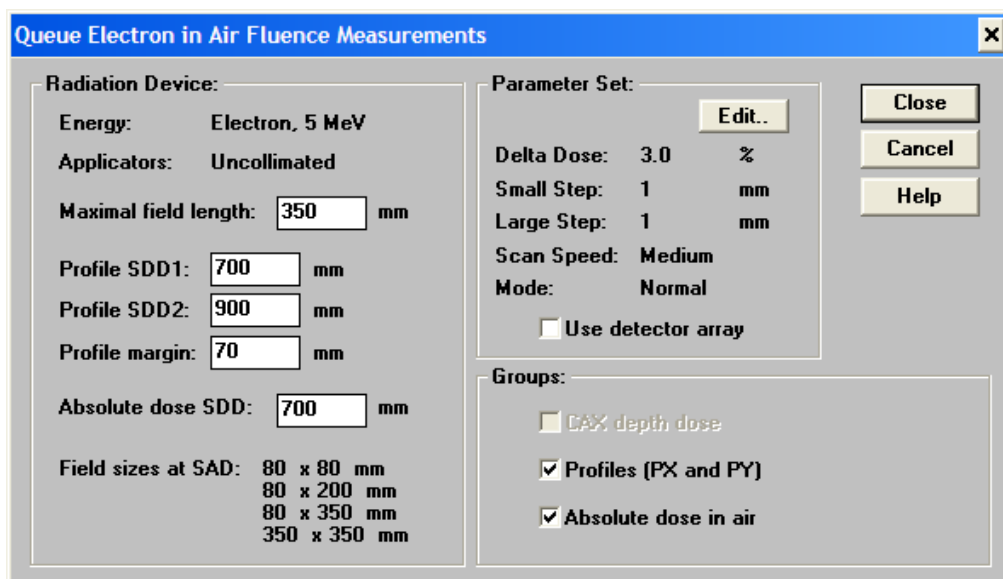
Indication

Normalization of the electrons measurements in air does not work properly. All profiles are not normalized.

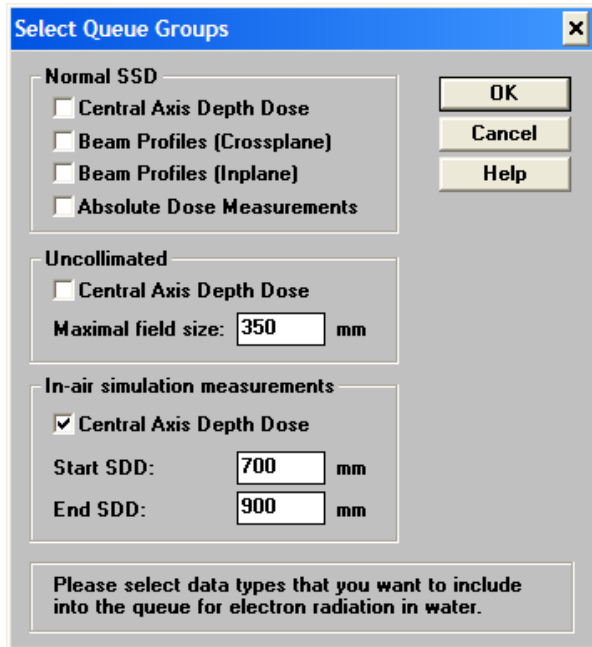
Workaround

All measurement in air must be normalized to the same point e.g. 8x20 cm field at SDD 70 cm.

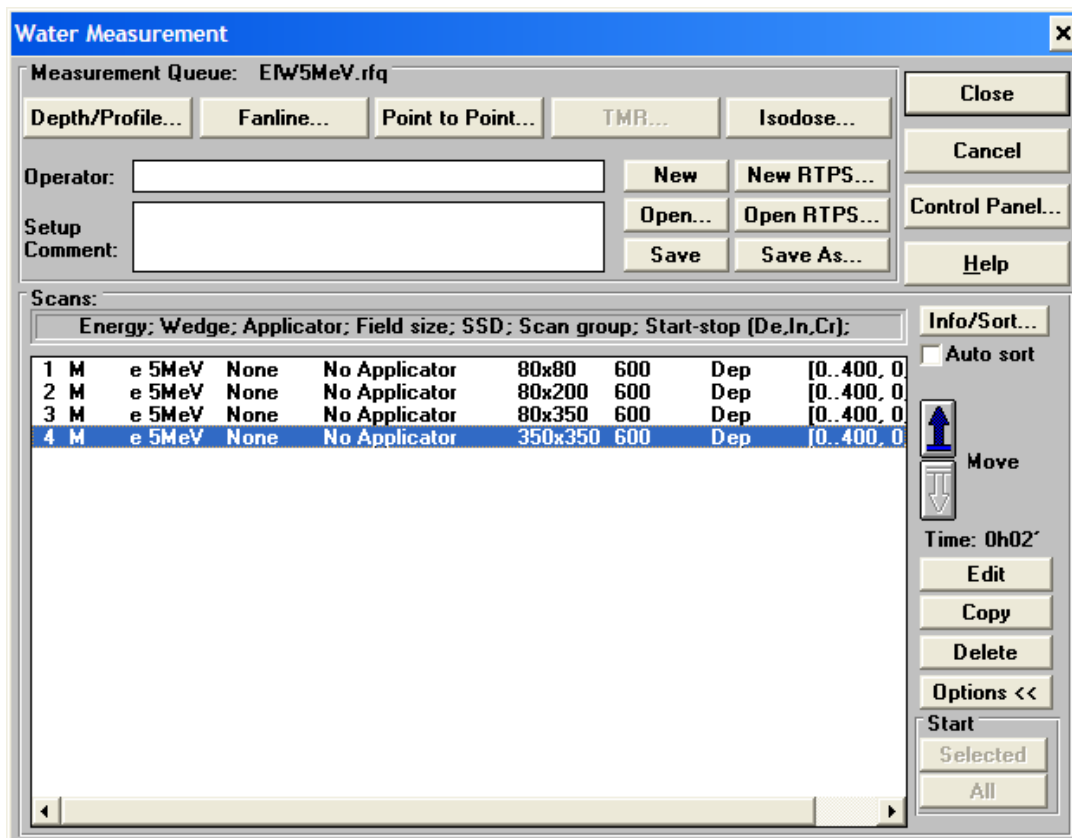
1. In **Air Fluence Measurements** setup mark the **Absolute dose in air** checkbox and change the **Absolute dose SDD** to the minimum SDD used e.g. 70 cm.



2. If 35 cm field width is too large for the phantom reduce Maximum **Field length** to e.g. 30 cm.
3. Create air queue.
4. Select **Water Meas** to setup queue for in air depth.
5. In **Select queue groups** change **End SDD** to maximum SDD e.g. 90 cm.



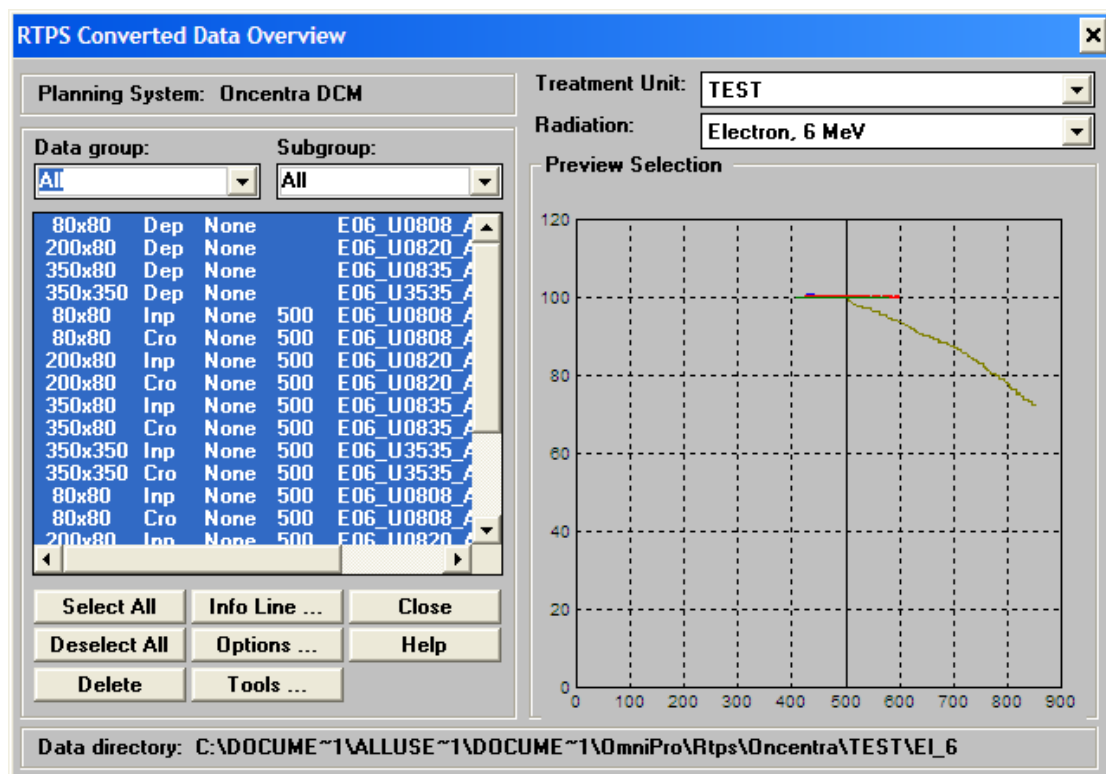
6. Create queue (one depth dose with field size 35x35 cm is created).
7. Select options **Copy** the depth scan 3 times.
8. Change the field size to the same as the profile scans (8x8, 8x20, 8x35; 35x35).



9. Perform the scans.
10. Save the scans.
11. Open the output factors scans. Double click the 20x8 field to renormalize it to 100 %. Print the table.

Meas Nbr.	FieldSize [mm]	Crosspl. [mm]	Inplane [mm]	Depth [mm]	AbsDose [Gy]	RelDose [%]	Measurement Time
1	80 x 80	0	0	0	---	89.4	2007-04-02 14:30:18
2	200 x 80	0	0	0	---	100	2007-04-02 14:30:33
3	350 x 80	0	0	0	---	123.2	2007-04-02 14:30:46
4	350 x 350	0	0	0	---	154.5	2007-04-02 14:31:05

12. Mark View RTPS Query Bar.
13. Press **Convert all in group**.
14. Press **View Target Files**.



RTPS Converted Data Overview

Planning System: Oncentra DCM

Treatment Unit: TEST

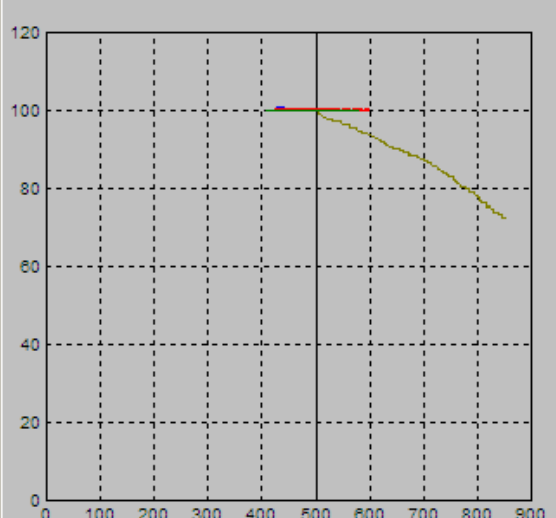
Radiation: Electron, 6 MeV

Data group: All Subgroup: All

FieldSize	Depth	None	500	None	500	None	500	None	500
80x80	Dep	None	E06_U0808_A						
200x80	Dep	None	E06_U0820_A						
350x80	Dep	None	E06_U0835_A						
350x350	Dep	None	E06_U3535_A						
80x80	Inp	None	500 E06_U0808_A						
80x80	Cro	None	500 E06_U0808_A						
200x80	Inp	None	500 E06_U0820_A						
200x80	Cro	None	500 E06_U0820_A						
350x80	Inp	None	500 E06_U0835_A						
350x80	Cro	None	500 E06_U0835_A						
350x350	Inp	None	500 E06_U3535_A						
350x350	Cro	None	500 E06_U3535_A						
80x80	Inp	None	500 E06_U0808_A						
80x80	Cro	None	500 E06_U0808_A						
200x80	Inp	None	500 E06_U0820_A						

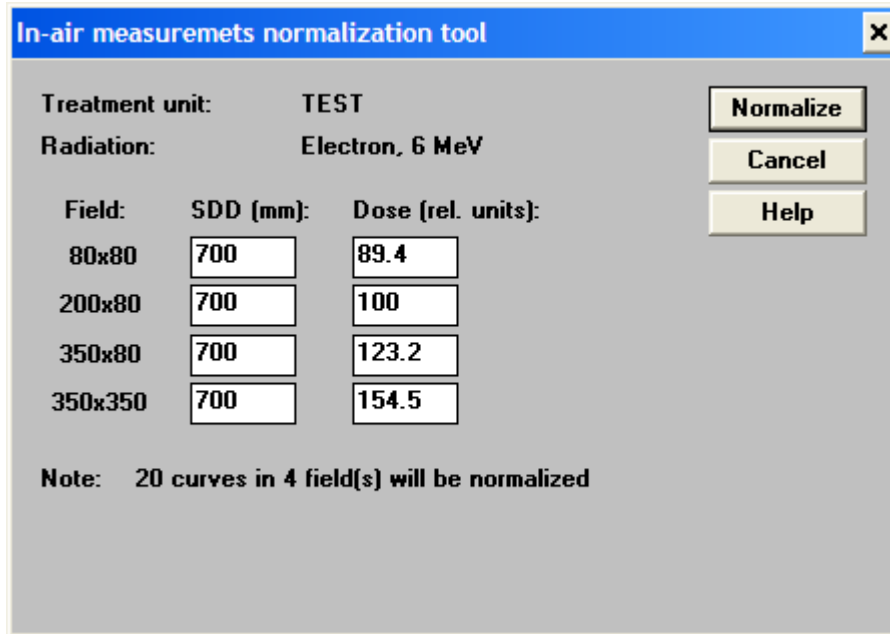
Buttons: Select All, Info Line ..., Close, Deselect All, Options ..., Help, Delete, Tools ...

Preview Selection



Data directory: C:\DOCUME~1\ALLUSE~1\DOCUME~1\OmniPro\Rtps\Oncentra\TEST\EI_6

15. Press **Tools**. Press **Normalization**.



Field:	SDD (mm):	Dose (rel. units):
80x80	700	89.4
200x80	700	100
350x80	700	123.2
350x350	700	154.5

Note: 20 curves in 4 field(s) will be normalized

16. Enter the **SDD** and Relative **Dose** from the Output factor table-

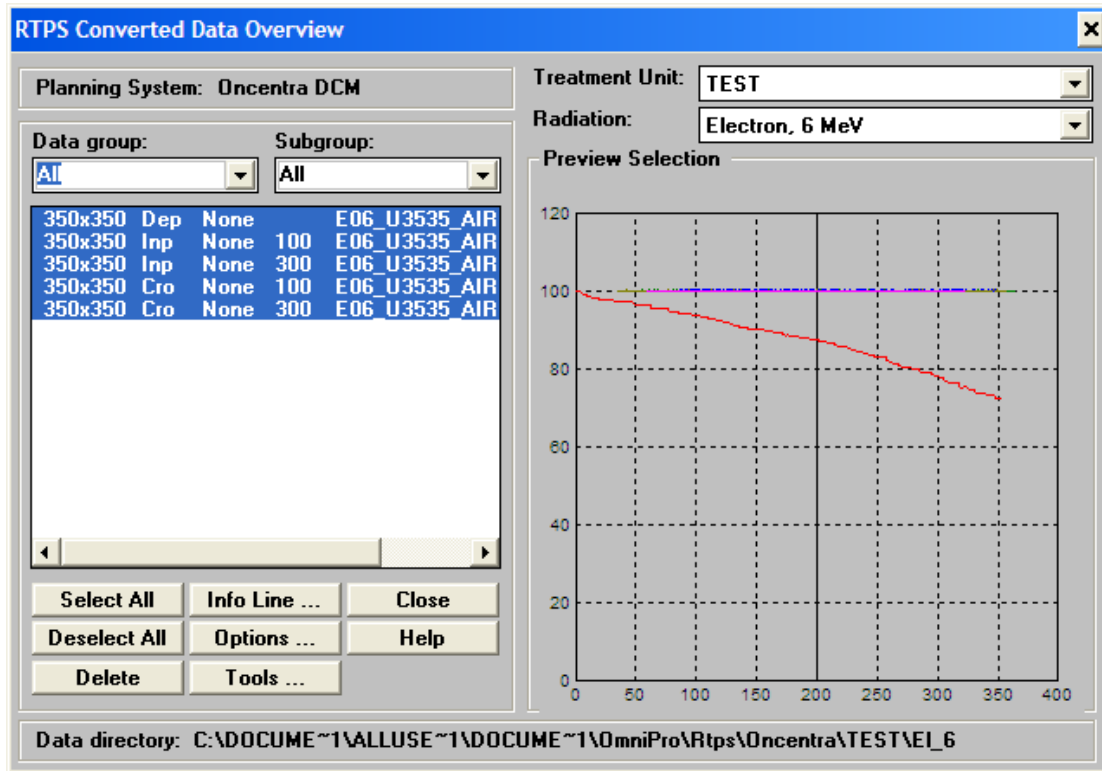
17. Press **Normalize**-

18. Now the profiles for three of the four field sizes are normalized. The fourth (normally 35x35cm) is not normalized (due to a software defect). Open the folder for the output files. The path is displayed in the **RTPS converted Data Overview** dialog. (RTPS\Oncentra\Linac\Energy). The files that have an earlier file date/time are not normalized.

19. Create a **TEMP** folder in the same folder as the files.

20. Move the files for the normalized field sizes to the **TEMP** folder. Be sure to leave the depth dose (extension .D) for the unnormalized field size in the original folder. It was normalized but is necessary for the normalization of the profiles for the fourth field size.

21. In the RTPS i/f Press **View Target** files. The scans of fourth field size are displayed.



22. Press **Tools**. Press **Normalization**.
23. Enter the **SSD** and **Dose** values. Press **Normalize**.
24. Now the fourth field size is normalized.
25. Move the files from the TEMP folder back to the original folder.



In case of any further questions, please contact us under:

IBA Dosimetry GmbH
Service Department
Bahnhofstrasse 5
DE-90592 Schwarzenbruck
Germany

Service hotline:

phone: +49 9128 607 38

fax: + 49 9128 607 10

mailto: service@iba-group.com