
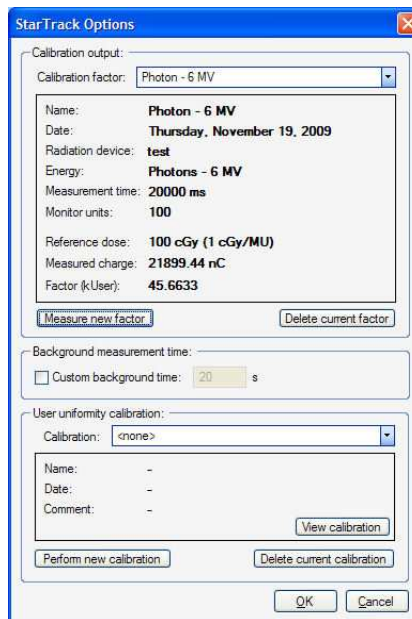


OmniPro-Advance Upgrade: User Uniformity Calibration

A new feature, **User uniformity calibration**, is added in the OmniPro-Advance software. In the toolbar, click the **StarTrack Options** icon  to open the **StarTrack Options** window, the **User uniformity calibration** box appears in the low part of the window.



When drifting pixels appear in the dose profile, you can perform a **User uniformity calibration** to correct the drifting.

Setting up Hardware:

There are two ways to setup StarTrack: table mounted (see StarTrack User's guide, 6.1 Table mounted, p.33) or head mounted (see StarTrack User's guide, 6.2, Head mounted, p.33). In the head mounted case an advanced Gantry holder must be used.

The recommended parameters:

SDD:	100 cm
Thickness of build up plates:	2 cm
Energy:	6 MV
Monitor unit:	100 MU
Field size:	28x 28 cm ²

NOTICE

IMPORTANT NOTICE

For uniformity calibration the machine warm-up time should be at least 60 minutes.

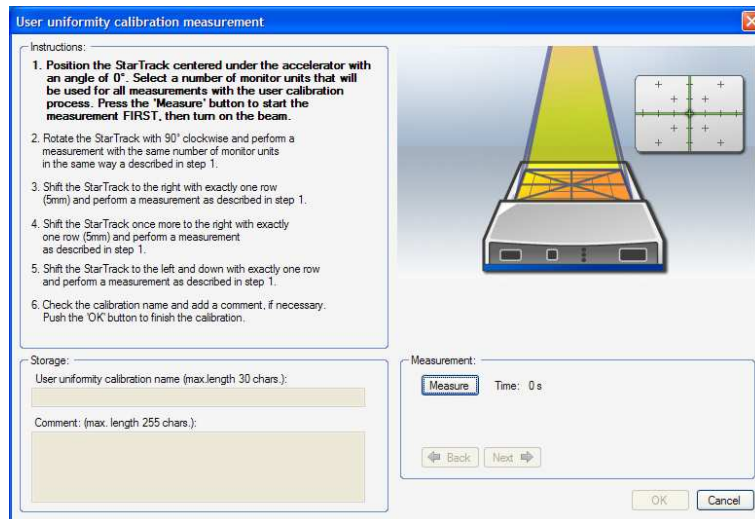
NOTICE

IMPORTANT NOTICE

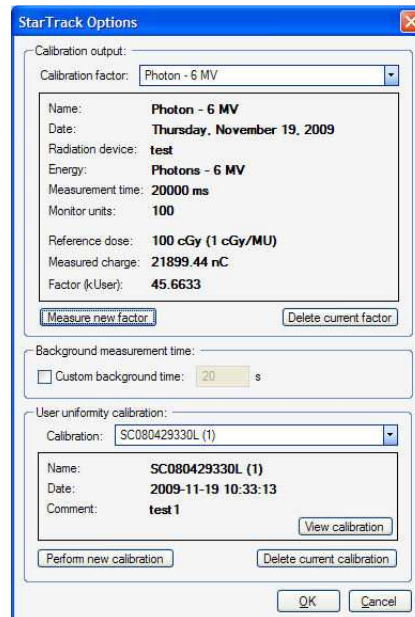
For uniformity calibration, the field size should be 28 x 28 cm².

Calibration procedure:

Click **Perform new calibration** to open the **User uniformity calibration measurement** window. Step by step follow the instructions as shown on the upper left side of the window to perform the calibration.



At the last step (6th step) of the procedure, the **storage** box in the **StarTrack Options** window becomes enabled to input the relevant information (name, date, or comments), click **OK** to finish the calibration. The **User uniformity calibration measurement** window closes automatically, and the calibration information is shown in the **Storage** box. To see the result of calibration, click **View calibration**. To delete the calibration, click **Delete current calibration**.



NOTICE

IMPORTANT NOTICE

After the execution of User uniformity calibration, the calibration factor must be re-measured.