

## Technical Note: Dose1 Firmware Upgrade to Version 2.7

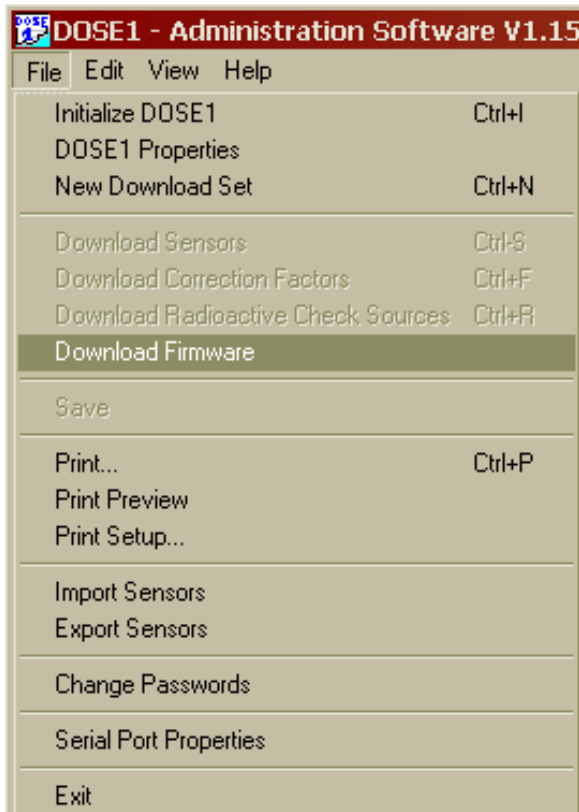
In order to use the new Dose1 measurement software, which enables the control of the Dose1 through the serial interface, a new firmware version must be installed in the Dose1 instrument. The firmware upgrade is carried out using the existing Dose1 PC software version 1.15. You need to be logged in as Administrator or Power User.

**Important note:** Loading the firmware into the Dose1 instrument erases the memory in the Dose1. This means that the downloaded set of sensors, check sources and correction factors, as well as the values of the initial measurements performed with combinations of chambers and checksources (if existing), are **deleted** in the instrument. The sensors, check sources and correction factors can be downloaded again afterwards from the PC. However, this is not the case for the initial checksource measurements. These measurements need to be repeated. You might want to note down the values of the existing initial measurements and do a comparison measurement before performing the firmware download, in order to maintain the track of the stability check.

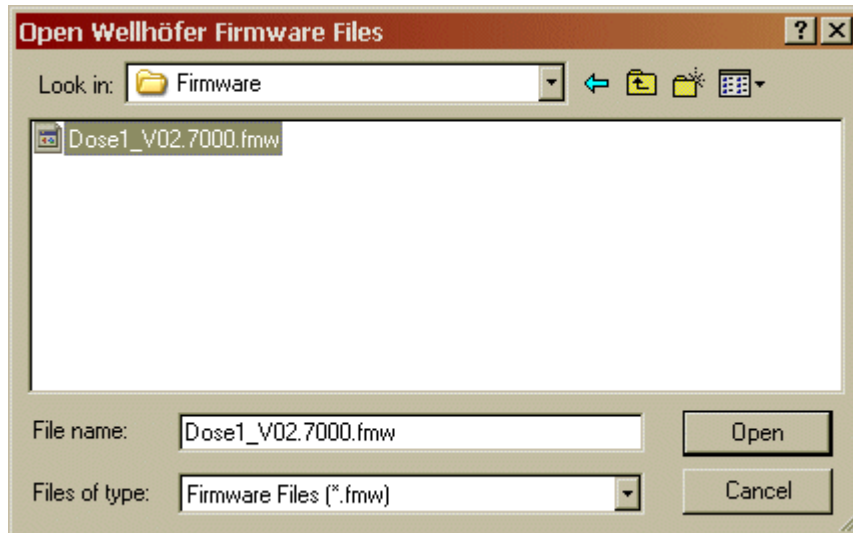
The firmware upgrade is carried out as follows:

Boot the Dose1 instrument, start the Dose1 PC software and login as Administrator or Power User. Ensure that the same baud rate (normally 38400 baud) is set in the Dose1 instrument (Setup / Device Setup / Options / RS-232) and the PC's serial interface (File / Serial Port Properties).

After you made sure that the same baud rate is set on both PC and Dose1, select "Download Firmware" from the File menu:

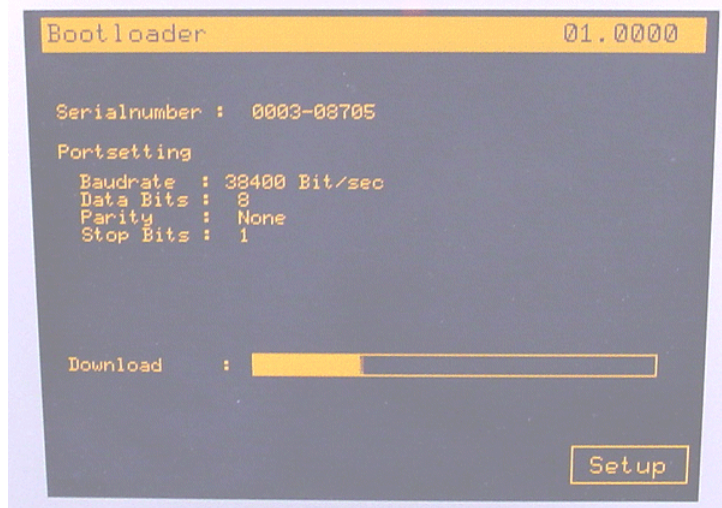


A standard File Open dialog appears. Locate and select the file **Dose1\_V02.7000.fmw** on the CD-ROM delivered with the Dose1 software resp. upgrade:



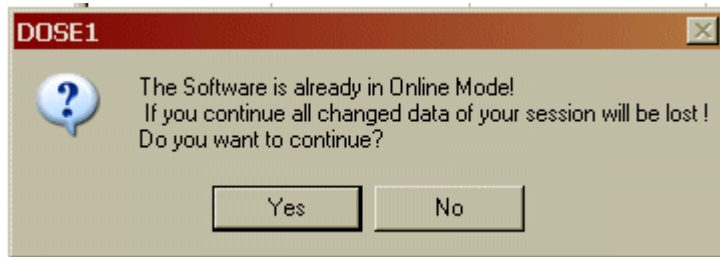
The Dose1 instrument will now attempt to reboot (see message "Waiting for Dose1 reboot" in the status line). It can take up to 30 seconds without visible action until the reboot happens and the bootloader window appears. **Do not interrupt this process!**

The new firmware is now loaded into the instrument.



At the end of the download, a message "Download finished" appears on the Dose1's screen. Now the Dose1 instrument will attempt to reboot again. It can take up to 30 seconds without visible action until this happens and the normal start screen appears. **Again do not attempt to interrupt this process!**

The Dose1 PC software will display the following message:



Here you select "Yes".

Now you can download again the already defined download sets of sensors, check sources and correction factors from the PC software into the Dose1 with the usual procedure.

Please be reminded that - in case you use check sources - the initial checksource measurements are erased and need to be repeated.

In case of problems or questions, please contact [service@iba-group.com](mailto:service@iba-group.com).