

MatriXX^{Evolution} Workflow

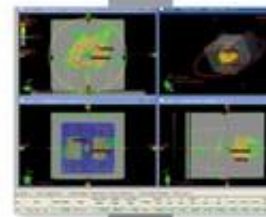
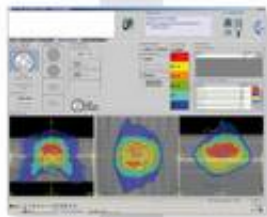
1) CT of MatriXX^{Evolution} with MULTICube and export to TPS



Hi-Art[®]

RapidArc[™]
VMAT

PLAN



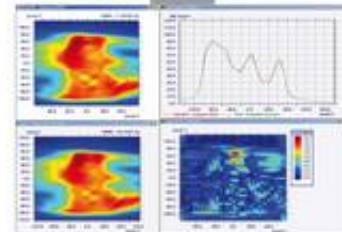
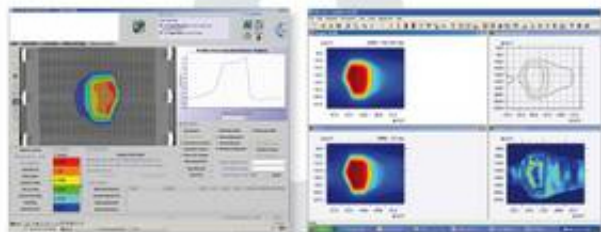
2) Treatment plan is recalculated with chambers at isocenter distance; Dose Maps are calculated and information is exported to OmniPro-I mRT

2) Treatment plan is recalculated with chambers at isocenter distance; Dose Maps are calculated and information is exported to OmniPro-I mRT



3) Set-up and deliver plan to MatriXX^{Evolution} and MULTICube

3) Set-up and deliver plan to MatriXX^{Evolution} and MULTICube



Export to DQA for analysis

4) MatriXX^{Evolution} data is compared to plan data using the palette of intuitive evaluation tools with OmniPro-I mRT

4) MatriXX^{Evolution} data is compared to plan data using the palette of intuitive evaluation tools with OmniPro-I mRT



Reject: Further evaluation is needed
Accept: Patient ready to treat



Reject: Further evaluation is needed
Accept: Patient ready to treat