



# QUALITY CONTROL IN MEDICAL IMAGING

## COMPUTED TOMOGRAPHY

Complete Solution

# Complete Solution

## MagicMaX Universal CT Case VD0250124

Your complete solution for CTDI measurements.\*

### Consisting of:

- **MagicMaX Universal Multimeter**  
with integrated high voltage module for Ionization Chambers
- **DCT10-MM**  
CT Ionization Chamber 10 cm
- **3-Part PMMA CT Phantom**  
for dose measurements  
(set for adults & pediatric)
- **Illuminance Detector**  
For use with MagicMaX Universal;  
Measurement range 1 – 10,000 lx
- **Trolley Case for convenient transportation**

### Optional devices:

- **DCT30-MM** VD1020302  
CT Ionization Chamber 30cm for wide beam CT's
- **Multidetector XR for CT in tomo mode**  
**[non-rotational]** VD0202030  
for PPV/kV measurements in CT



\*MagicMax Universal Cases are preconfigured to meet all standard QC needs. Optional tools for additional applications are available.

# Complete Solutions

## QC Kit IBAct pediatric VD1050103

### Adult Head & Body / Pediatric Head & Body

Complete measuring kit for CTDI measurements at all types of CT scanners.

#### Consisting of:

- **3-part Modular PMMA CT-Phantom for Dose Measurements**  
Adult head & body / pediatric head & body
- **Dosimeter Dosimax plus A HV**  
With internal high voltage supply for use with ionization chamber DCT10-RS
- **Ionisation Chamber DCT10-RS / Lemo**
- **Extension Cable, 8 m**
- **Specialist Booklet "Radiation Exposure in Computed Tomography"**
- **Carrying Case**  
With removable trolley



## QC Kit IBAct Standard VD1050102

### Adult Head & Body

Complete measuring kit for dose measurements in computed tomography according to IEC 60601-2-44, IEC 61223-2-6, -3-5.

#### Consisting of:

- **2-parted Modular CT-Phantom for Dose Measurements**  
Adult head & body
- **Dosimeter Dosimax plus A HV**  
With internal high voltage supply for use with ionization chamber DCT10-RS
- **Ionisation Chamber DCT10-RS / Lemo**
- **Extension Cable, 8 m**
- **Specialist Booklet "Radiation Exposure in Computed Tomography"**
- **Carrying Case**  
With removable trolley



For luminance / illuminance measurements of your image display device, please see chapter "Quality Control at Medical Displays", page 52.

# Multimeter

## MagicMaX<sup>Universal</sup> Multimeter CT Kit

VD0250126\_US

### Your All-In-One Dose QA Solution.\*

#### Consisting of:

- **High-end Multimeter Solution**  
for all needs in beam verification;  
incl. advanced MagicMaX software for fast  
and complete dose measurement overview;  
Plug and Play system allows fast and  
seamless workflow within ONE minute  
setup time
- **DCT10-MM**  
CT Ionization Chamber 10 cm
- **Multidetector XR for CT in tomo mode  
[non-rotational], Radiography & Fluoroscopy**  
Measuring values: kVp, PPV, HVL, dose,  
dose rate, dose per pulse, exposure time  
and wave form
- **Illuminance Detector**  
Light output measurements of image  
intensifiers and viewing boxes
- **Carrying Case**

#### Optional devices:

- **DCT30-MM** VD1020302  
CT Ionization Chamber 30cm for wide beam CT's
- **Multidetector XR for CT in tomo mode  
[non-rotational]**  
for PPV/kV measurements in CT



\*MagicMax Universal Cases are preconfigured to meet all standard QC needs.  
Optional tools for additional applications are available.

# Test devices

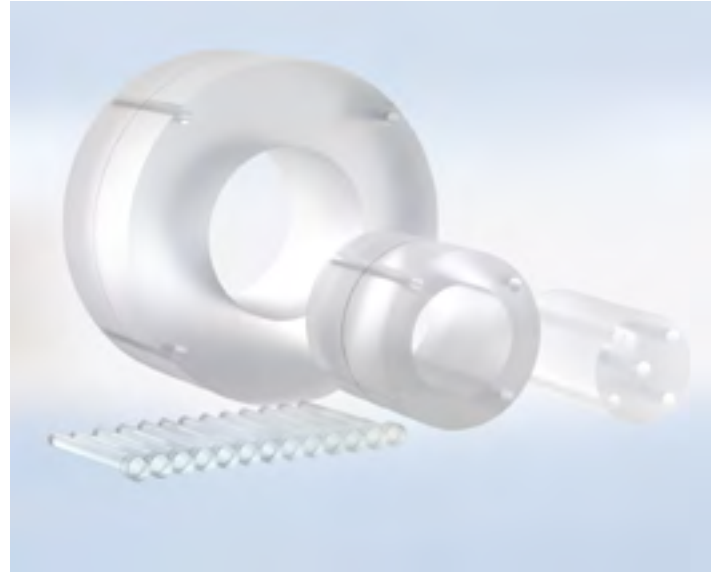
## 3-part PMMA CT-Phantom

### Adult Head & Body / Pediatric Head & Body VD1003105

Innovative 3-part nested PMMA phantom for CTDI measurements. Designed to image pediatric and adult head and body in accordance with FDA performance standard for diagnostic X-ray systems [21CFR 1020.33].

#### Consisting of:

- 1 pediatric head phantom, 10 cm diameter, 5 holes
- 1 adult head-/pediatric body phantom, 16 cm diameter, 4 holes
- 1 adult body annulus, 32 cm diameter, 4 holes  
*(The above-mentioned 3 phantoms fit into each other!)*
- 13 acrylic rods for plugging all the phantom holes



## 2-part PMMA CT-Phantom

### Adult Head & Body VD1003110

Phantom for CTDI measurements according to IEC 60601-2-44, IEC 61223-3-5, IEC 61223-2-6.

#### Consisting of:

- 1 adult head phantom, 16 cm diameter, 5 holes
- 1 adult body annulus, 32 cm diameter, 4 holes
- 9 acrylic rods for plugging all the phantom holes





Discover more online:  
[iba-dosimetry.com](http://iba-dosimetry.com)



IBA offers innovative high-quality solutions and services with a focus on patient safety in cancer diagnosis and therapy.



### **Medical Imaging:**

#### **Safer Imaging, Earlier Cancer Detection**

- Innovative Quality Assurance (QA) devices for x-ray dose and image quality checks, as well as QA of diagnostic displays
- Patient dose monitoring solutions for x-ray imaging systems

### **Radiation Therapy:**

#### **Fighting Cancer Safely and Precisely**

- Industry-leading dosimetry and QA solutions that maximize efficiency and minimize errors for better outcomes
- Flexible soft tissue imaging markers (VISICOIL™) enable precise tumor targeting and tracking for pinpoint RT, IGRT and SBRT treatment accuracy and patient safety
- Undisputed leader in Proton Therapy delivery systems: Providing highly precise and effective radiation therapy

### **Europe, Middle East, Africa**

IBA Dosimetry GmbH  
Bahnhofstr. 5  
90592 Schwarzenbruck, Germany  
Tel.: +49 9128 607 0  
Fax: +49 9128 607 10

### **North America, Latin America**

IBA Dosimetry America  
3150 Stage Post Drive, Suite 110  
Bartlett, TN 38133, USA  
Tel.: +1 901 386 2242  
Fax: +1 901 382 9453

### **Asia Pacific**

IBA Dosimetry Asia Pacific  
No.6, Xing Guang Er Jie Beijing  
OPTO-mechatronics  
Industrial Park (OIP),  
Tongzhou District  
Beijing 101111, China  
Tel.: +86 10 8080 9288  
Fax: +86 10 8080 9299

[dosimetry-info@iba-group.com](mailto:dosimetry-info@iba-group.com)

Distributed by: